

Use Hopper to simulate BA on ICT Mode Installation Guide

A. Equipment List:

- (1) Mini Hopper MH 125/245 1
- (2) Power Supply 12V/110V 1
- (3) Software (Hopper Setting Tool) 1
- (4) FP-001 Programmer 1

B. Cable List:

- (1) DC 12V/24V WEL-HP17 1
- ICT Protocol WEL-7U06 1

C. Dip Switch Setting:

- (1) Mini Hopper dip switch (This dip switch is located on the bottom of Mini Hopper)

Interface	SW1	SW2	SW3	SW4
Ict protocol	ON	ON	ON	ON

Download Firmware

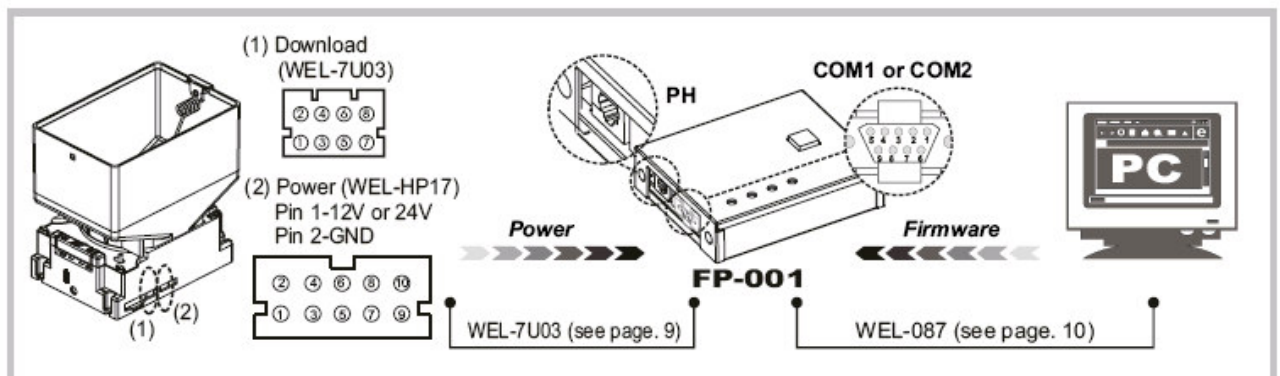
- (2) Mini Hopper

Please install Hopper Setting Kit.

- Step1: Please run “setup.exe”
- Step2: Confirm “YES” to confirm installation
- Step3: Choose your installation path then press the button
- Step4: The installation starts
- Step5: Installation Completes

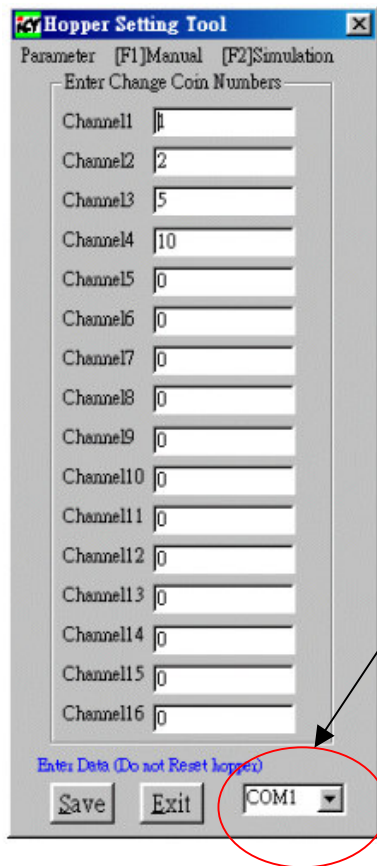
D. Operation driftage of “Hopper Setting Kit”

Connecting Method



P.S. Please confirm Mini Hopper is on ICT mode. (Refer to page2 Mini Hopper dip switch).

- (1) Open “Hopper Setting Tool” software
- (2) The screen of Hopper Setting Tool will show as following.



Please check which COM port that you connected to PC.

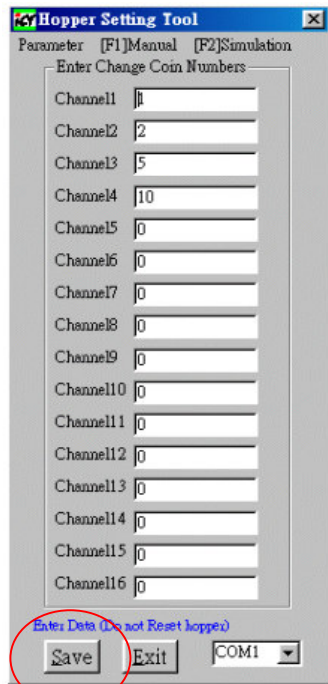
Note:

If you enter normally the setting screen of Hopper ICT mode, the bottom of Hopper Setting Tool will show “Enter Data (Do not Rest hopper)”. Also the led of Mini Hopper will show orange light.

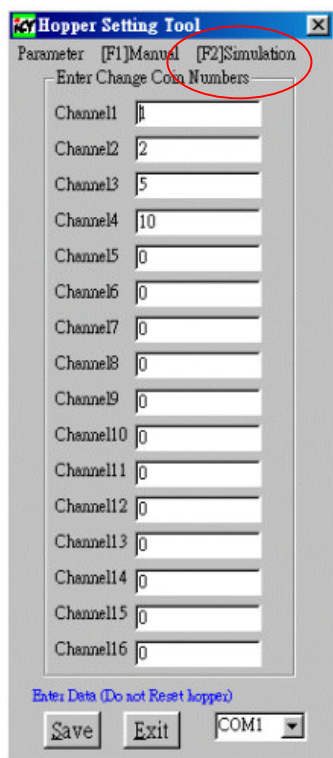
At this moment, please do not reset or disconnect Mini Hopper.

If the bottom of Hopper Setting Tool shows “Switch on MiniHopper” or other messages , please restart the Mini Hopper.

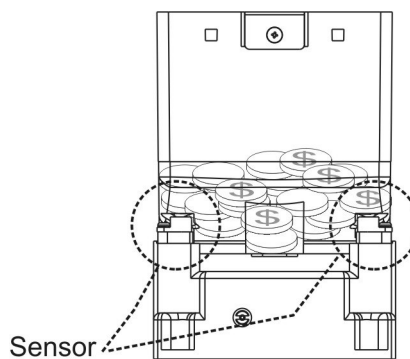
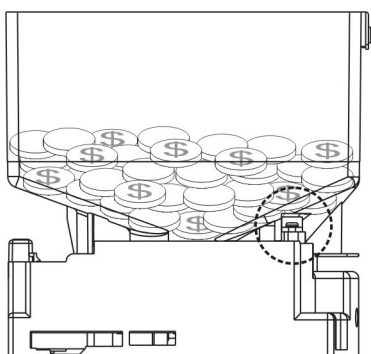
- (3) Turn on “Mini Hopper” Power.
- (4) Change the coin numbers of channel and press “Save” button



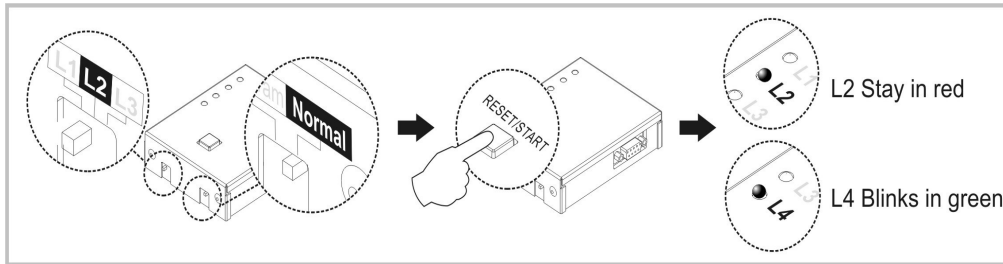
(5) Press “F2” for entering simulation



(6) Put coins into coin box and the level of coins must be higher than the level of optical sensor



(7) Press the “RESET/START” button of FP-001



(8) When Mini Hopper become green light, please press “Start Up”



(9) Select “Channel” and press “Dispense” then Mini Hopper will start dispense

